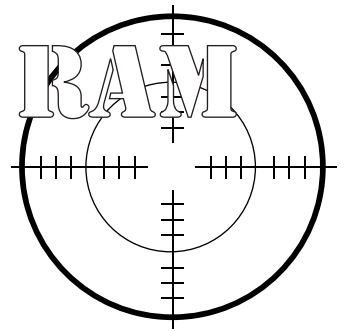
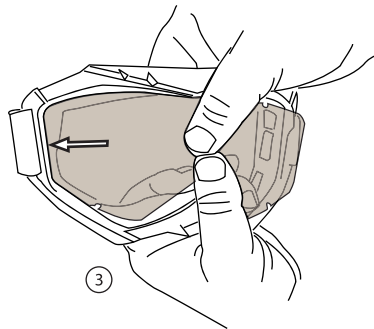
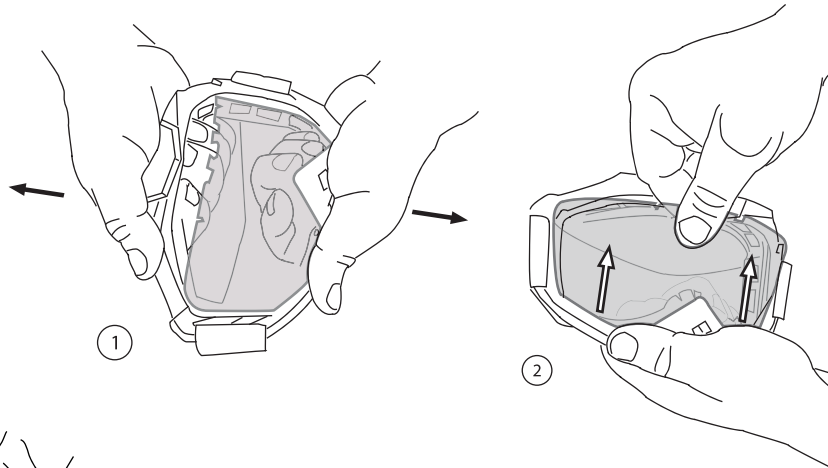


The lens can be removed from the goggles without the use of tools. Starting at the top, simply pull the frame outwards as shown in fig.1

Remove the lens from the frame as shown in fig.2



ARIETE DEFENCE GOGGLES



To fit the lens, follow the instructions shown in figures 3 to 7.
-Fig.3 insert the lens into the frame starting on the right-hand side

-Fig.4 insert the lens into the frame on the left-hand side

-Fig.5 ensure the lens is fully engaged in the top of the frame

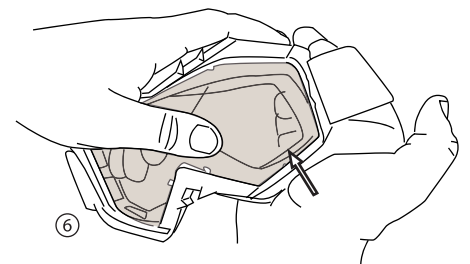
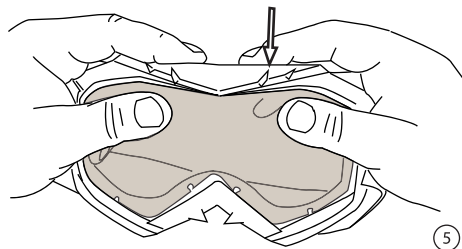
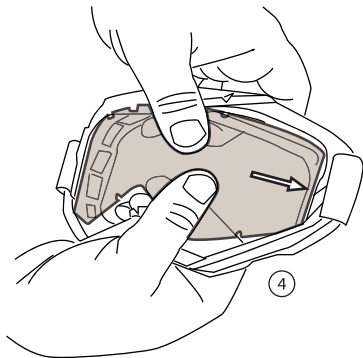


Fig.6 gently press the lens into the frame at the lower left side, as shown. Then press it into the frame's lower right side
Fig.7 insert the lens around the nosepiece and ensure everything is tight

